



# HAND POWER TOOLS

*Your speedy effortless tool* ▶

JK Files (India) Limited is a 63-year old company built on a legacy of excellence synonymous with Raymond's Limited. With five ISO 9001:2008 certified plants, at Ratnagiri, Chiplun, Pithampur, Vapi and Kolkata, our products are marketed all over the country by 600 dealers. Our footprint extends to countries in Europe as well as USA, UK and Latin America with a product range that consists of Files, HSS Drills, Hand Tools, Power Tools, Solid Carbide Tools, HSS Taps and End Mills.

We are committed to combining mechanical and digital engineering to produce innovative solutions for you. Blending the brand's core ideals with the changing requirement of times, we are launching a new outlook with JK Superdrive. This is not just a change in name but also a change in the way we will do our business. It promises new tamper-proof packaging, renewed marketing support and open channels of communication.

Our promise of being your speedy effortless tool combines cutting edge technology with reliability and quality. As you set forth to build a new tomorrow, you will find a reliable partner by your side.

We welcome you to the world of JK Superdrive.



**JK Files (India) Limited**  
(A Subsidiary of **raymond** Limited)

# Quality Policy

For our consistent growth, we are committed to provide products & services that meet our customers requirements and enhance their satisfaction by understanding their needs of Quality, Cost, Delivery and accordingly improve our products and services.

We will continually improve the effectiveness and compliance of our Quality Management System with the involvement of employees at all levels.



**Sushil Luniya**  
C.E.O.



**Files made to  
International  
specifications**

**B.S.S.** : British Standard Specification 498 Part 1; 1960. Metric Values

**A.S.S.** : Federal (American Pattern) Standard Specification CCG-F-325b

# Index

Sr. No.	Particulars	Pg.No.
01	Cutter JKC5HD	02
02	Blower JKBL	04
03	Circular Saw JKCR185	05
04	Jigsaw JKJS65	06
05	Electric Planer JKEP3-82	07
06	Rotary Drill JKED10	09
07	Impact Drill JKID13HD	11
08	Impact Drill JKID10VR	13
09	Impact Drill JKID13VR	14
10	Angle Grinder JKAG100HD	15
11	Angle Grinder JKAG125	16
12	Angle Grinder JKAG125PRO	17
13	Angle Grinder JKAG180PRO	18
14	Cut-Off Saw JKCS14HD	19
15	Power Tools Accessories	20

## Power Tools



## JKC5PRO



### Cutter JKC5PRO

#### **Key Features:**

- High Power Performance
- Robust 4 Screw Construction
- Soft Grip Handle
- Dust Proof Switch
- Carbon Brush Externally Accessible

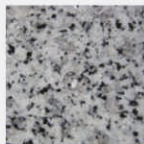
#### **Technical Specifications**

Power Input	1350 W
No Load Speed	12500 RPM
Rated Voltage	230 V
Frequency	50 Hz
Net Weight	2.8 kg
Wheel	125 mm
Cutting Depth	40 mm





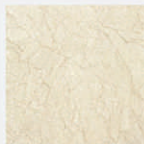
### Suitable For



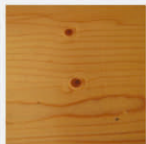
Granite



Kadappa



Tiles



Wood

### Recommended Accessories



GranTile-Cut



BrickStone-Cut



Fine-Mould



TCT Wood-Cut

### Use JK Genuine Spares



Carbon Brush



Armature



Gear



Bearings



Switch



## Blower JKBL

JKBL



### Key Features:

- Durable Nylon Body
- Lock on Switch
- Blow and Suction
- External Carbon Brush Access

### Technical Specifications

Power Input	440 W
Rated Voltage	230 V
Frequency	50 Hz
No Load Speed	13000 RPM
Net Weight	1.8 kg

### Use JK Genuine Spares



Carbon Brush



Armature



Gear



Bearings



Switch





## Circular Saw

JKCR185

JKCR185



### Key Features:

- High Power
- Ergonomic Soft Grip Handle
- External Carbon Brush Access
- Lock On Switch
- Degree Cutting

### Technical Specifications

Power Input	1350 W
Rated Voltage	230 V
Frequency	50 Hz
No Load Speed	5000 RPM
Wheel Diameter	185 mm
Net Weight	4.2 kg
Cutting Depth 90°	62 mm
Cutting Depth 45°	45 mm



### Suitable For



Wood

### Recommended Accessories



TCT Wood-Cut

### Use JK Genuine Spares



Carbon Brush



Armature



Gear



Bearings



Switch

JKJS65



Jig Saw  
JKJS65



**Key Features:**

- Ergonomic Soft Grip Handle
- Variable Speed
- 4 Step Pendulum Action

**Suitable For**



Aluminium



Wood

**Technical Specifications**

Power Input	500 W
Rated Voltage	230 V
Frequency	50 Hz
No Load Speed	500-3100 SPM
Net Weight	2 kg
Cutting Depth in Wood	65 mm
Cutting Depth in Steel	6 mm

**Use JK Genuine Spares**



Carbon Brush



Armature



Gear



Bearings



Switch



*Suitable For*



Wood

*Use JK Genuine Spares*



Carbon Brush



Armature



Gear



Bearings



Switch



**Rotary  
Drill  
JKED10PRO**

## JKED10PRO



### **Key Features:**

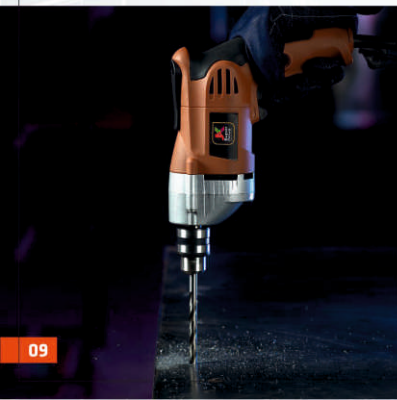
- Variable Speed
- Light Weight Design
- Dust Proof Switch
- Reverse / Forward Operation
- Soft Grip Handle

### **Technical Specifications**

Power Input	500 W
No Load Speed	2800 RPM
Rated Voltage	230 V
Frequency	50 Hz.
Net Weight	1.6 kg

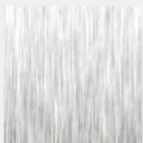
### **Drilling Range**

In Aluminium	10 mm
In Wood	25 mm
In Steel	8 mm





#### Suitable For



Aluminium



S.S.



Wood

#### Recommended Accessories



#### A) FOR ALUMINIUM & S.S.

i) Jobber Drill Bit ii) Stub Drill Bit



#### B) FOR WOOD

i) Jobber Drill Bit ii) Hole Saw

#### Use JK Genuine Spares



Carbon Brush



Armature



Gear



Bearings



Switch



**Impact  
Drill  
JKID13PRO**

**JKID13PRO**



**Key Features:**

- Robust Design
- Variable Speed
- High Power
- Dust Proof Switch
- Reverse / Forward Operation
- Soft Grip Handle

**Technical Specifications**

Power Input	720 W
No Load Speed	3000 RPM
Rated Voltage	230 V
Frequency	50 Hz.
Net Weight	2.6 kg
Impact Rate at No Load Speed	0-44800 bpm

**Drilling Range**

In Wood	20 mm
In Steel	13 mm
In Concrete	16 mm





### Suitable For



Aluminium



S.S.



Wood



Concrete



Tiles

### Recommended Accessories



A) For Aluminium  
& S.S.  
i) Jobber Drill Bit  
ii) Stub Drill Bit



B) For Wood  
i) Jobber Drill Bit  
ii) Hole Saw



B) For Concrete  
i) Masonry Drill Bit

### Use JK Genuine Spares



Carbon Brush



Armature



Gear



Bearings



Switch





**Impact  
Drill  
JKID10VR**

**JKID10VR**



**Key Features:**

- Variable Speed
- Heavy Duty
- Lock On Switch
- Reverse / Forward Operation

**Technical Specifications**

Power Input	550 W
No Load Speed	0-3000 RPM
Rated Voltage	230 V
Frequency	50 Hz
Net Weight	1.8 kg
Chuck Clamp Range	1.5 to 10 mm
Impact Rate at No Load Speed	0-48000 bpm

**Drilling Range**

In Wood	20 mm
In Steel	10 mm
In Concrete	10 mm

**Suitable For**



Aluminium



Wood



Concrete

**Recommended Accessories**



A) For Aluminium  
& S.S.  
i) Jobber Drill Bit  
ii) Stub Drill Bit



B) For Wood  
i) Jobber Drill Bit  
ii) Hole Saw



B) For Concrete  
i) Masonry Drill Bit

**Use JK Genuine Spares**



Carbon Brush



Armature



Gear



Bearings



Switch





## Impact Drill JKID13VR

# JKID13VR



### Key Features:

- Variable Speed
- Light Weight
- Lock On Switch
- Soft Grip
- Reverse / Forward Operation

### Technical Specifications

Power Input	550 W
No Load Speed	0-3000 RPM
Rated Voltage	230 V
Net Weight	1.8 kg
Chuck Clamp Range	1.5 to 13 mm
Impact Rate at No Load Speed	0-48000 bpm

### Drilling Range

In Wood	20 mm
In Steel	13 mm
In Concrete	13 mm

### Suitable For



Aluminium



Wood



Concrete

### Recommended Accessories



A) For Aluminium  
& S.S.  
i) Jobber Drill Bit  
ii) Stub Drill Bit



B) For Wood  
i) Jobber Drill Bit  
ii) Hole Saw



B) For Concrete  
i) Masonry Drill Bit

### Use JK Genuine Spares



Carbon Brush



Armature



Gear



Bearings



Switch



## Angle Grinder JKAG100PRO

JKAG100PRO



### Key Features:

- Heavy Duty
- Adjustable Wheel Guard
- Two Position Side Handle

### Technical Specifications

Power Input	850 W
Grinding / Cutting Disc	100 mm
Rated Voltage	230 V
Frequency	50 Hz
No Load Speed	11500 RPM
Net Weight	2 kg

### Suitable For



M.S.



S.S.

### Recommended Accessories



DC Disc



Super Thin  
Cutting Disc

\*Sanding & Polishing Disc



Flat Cutting Disc

### Use JK Genuine Spares



Carbon Brush



Armature



Gear



Bearings



Switch

JKAG125



Angle  
Grinder  
JKAG125

**Key Features:**

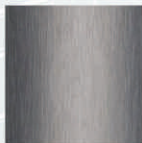
- Heavy Duty
- Lock on Switch
- Adjustable Wheel Guard
- Two Position Side Handle



**Technical Specifications**

Power Input	1050 W
Grinding / Cutting Disc	125 mm
Rated Voltage	230 V
Frequency	50 Hz
No Load Speed	11000 RPM
Net Weight	2.3 kg

**Suitable For**



M.S.



S.S.

**Recommended Accessories**



DG Disc



Super Thin  
Cutting Disc



Flat Cutting Disc

\*Sanding & Polishing Disc

**Use JK Genuine Spares**



Carbon Brush



Armature



Gear



Bearings



Switch



## Angle Grinder JKAG125PRO

JKAG125PRO



### Key Features:

- Heavy Duty
- Lock on Switch
- Adjustable Wheel Guard
- Three Position Side Handle

### Technical Specifications

Power Input	1450 W
Grinding / Cutting Disc	125 mm
Rated Voltage	230 V
Frequency	50 Hz
No Load Speed	9000 RPM
Net Weight	3 kg

### Suitable For



M.S.



S.S.

### Recommended Accessories



DC Disc



Super Thin  
Cutting Disc

\*Sanding & Polishing Disc



Flat Cutting Disc

### Use JK Genuine Spares



Carbon Brush



Armature



Gear



Bearings



Switch



## Angle Grinder JKAG180PRO

JKAG180PRO



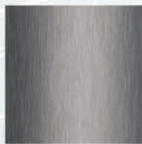
### Key Features:

- Soft Start
- Heavy Duty
- Lock on Switch
- Adjustable Wheel Guard

### Technical Specifications

Power Input	2500 W
Grinding / Cutting Disc	180 mm
Rated Voltage	230 V
Frequency	50 Hz
No Load Speed	8000 RPM
Net Weight	5.2 kg

### Suitable For



M.S.



S.S.

### Recommended Accessories



DG Disc



Super Thin  
Cutting Disc

\*Sanding & Polishing Disc



Flat Cutting Disc

### Use JK Genuine Spares



Carbon Brush



Armature



Gear



Bearings



Switch



## Cut-Off Saw JKCS14PRO

JKCS14PRO



### Key Features:

- High Power
- Lock on Switch
- Adjustable Wheel Guard
- Both Side Degree Cutting
- Ergonomic D-Shaped Handle

### Technical Specifications

Power Input	2300 W
Rated Voltage	230 V
Frequency	50 Hz
No Load Speed	3800 RPM
Net Weight	18 kg

### Suitable For



M.S.



S.S.

### Recommended Accessories



Flat Cutting Disc  
355 x 2.8 x 25.4mm

### Use JK Genuine Spares



Carbon Brush



Armature



Gear



Bearings



Switch



**Router  
JKRT12PRO**

**JKRT12PRO**



**Key Features:**

- 0-45mm Plunge Type Base
- High Power
- 4 Pillar Construction
- Guide Adjustment Scale for Faster Fitment
- Led Light

**Technical Specifications**

Power Input	1300 W
Rated Voltage	230 V
Frequency	50 Hz
No Load Speed	21000 RPM
Wheel Diameter	12mm
Net Weight	4.4 kg



**Suitable For**



Wood



## Rotary Hammer

JKRH2260DRPRO

### JKRH2-260DRPRO



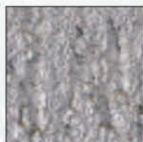
#### Key Features:

- Soft Grip Handle
- Easy to Change Tool Holder
- Forward/Reverse Operation
- 3 Functions-Drilling, Hammering & Chiseling

#### Technical Specifications

Power Input	800 W
Rated Voltage	230 V
Frequency	50 Hz
No Load Speed	0-1300 RPM
Impact Rate	0-4000 BPM
Impact Energy	3J
Net Weight	2.8 kg

#### Suitable For



Concrete









**JK Files (India) Limited**  
(A Subsidiary of **raymond** Limited)

*Regd. Off.:* New Hind House, N. M. Marg, Ballard Estate, Mumbai - 400 001. Maharashtra, India.

*Sales Off.:* P.O. Jekegram, Pokhran Road No.1, Thane - 400 606. Maharashtra, India.

*Phone:* (+91-22) 6152 8754 / 7000 *Fax:* (+91-22) 6152 8819 / 20 *Email:* [jkptccc@raymond.in](mailto:jkptccc@raymond.in)

*Log On To:* [www.jkfilesandtools.com](http://www.jkfilesandtools.com)